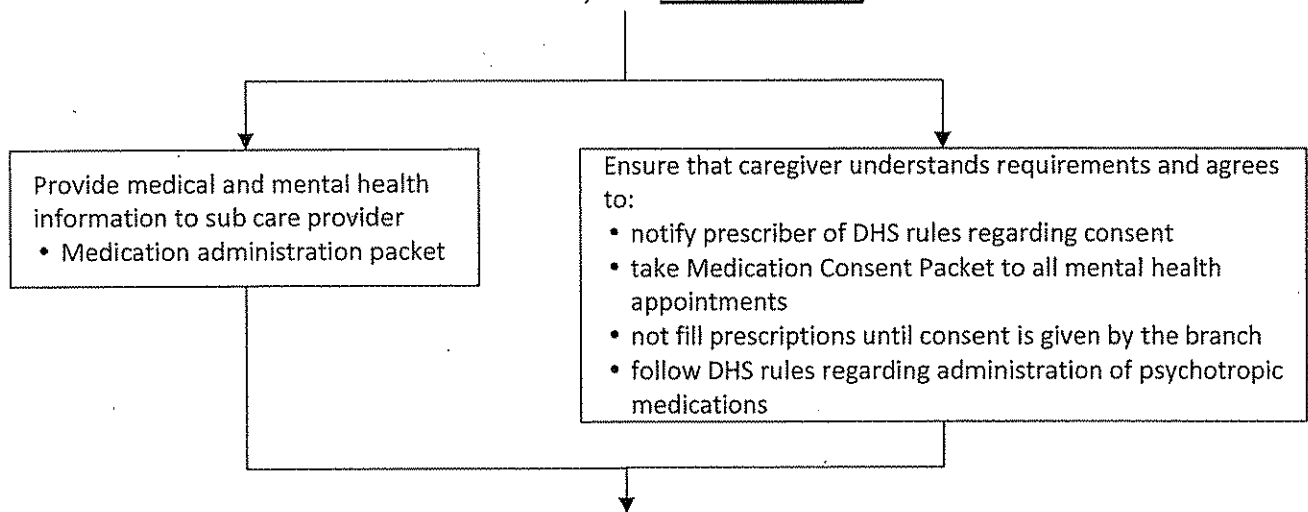
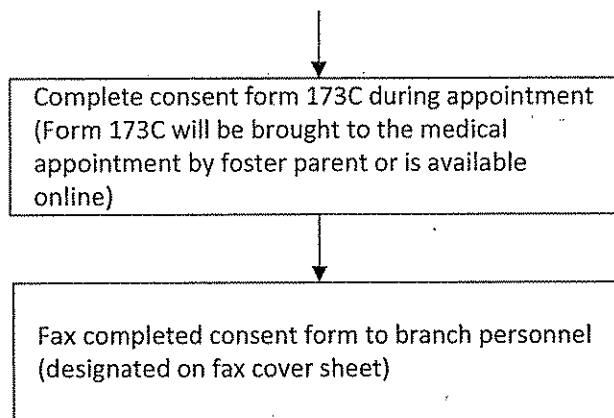


# Psychotropic Medication Management -- Consent Process Flow

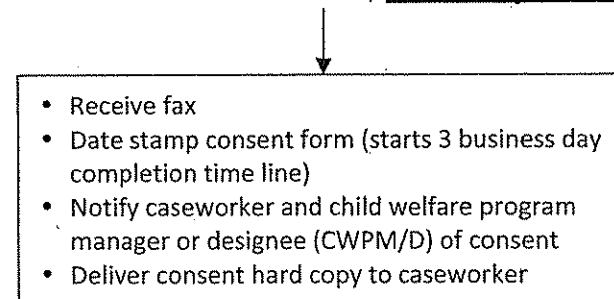
1. When child is initially placed in substitute case, the **caseworker** will:



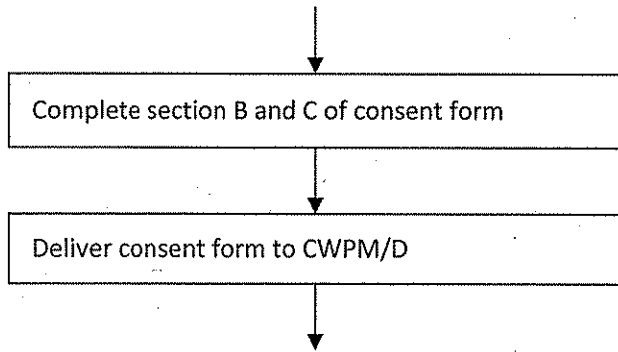
2. When child presents with mental health issue requiring psychotropic medication, the **prescriber** will:



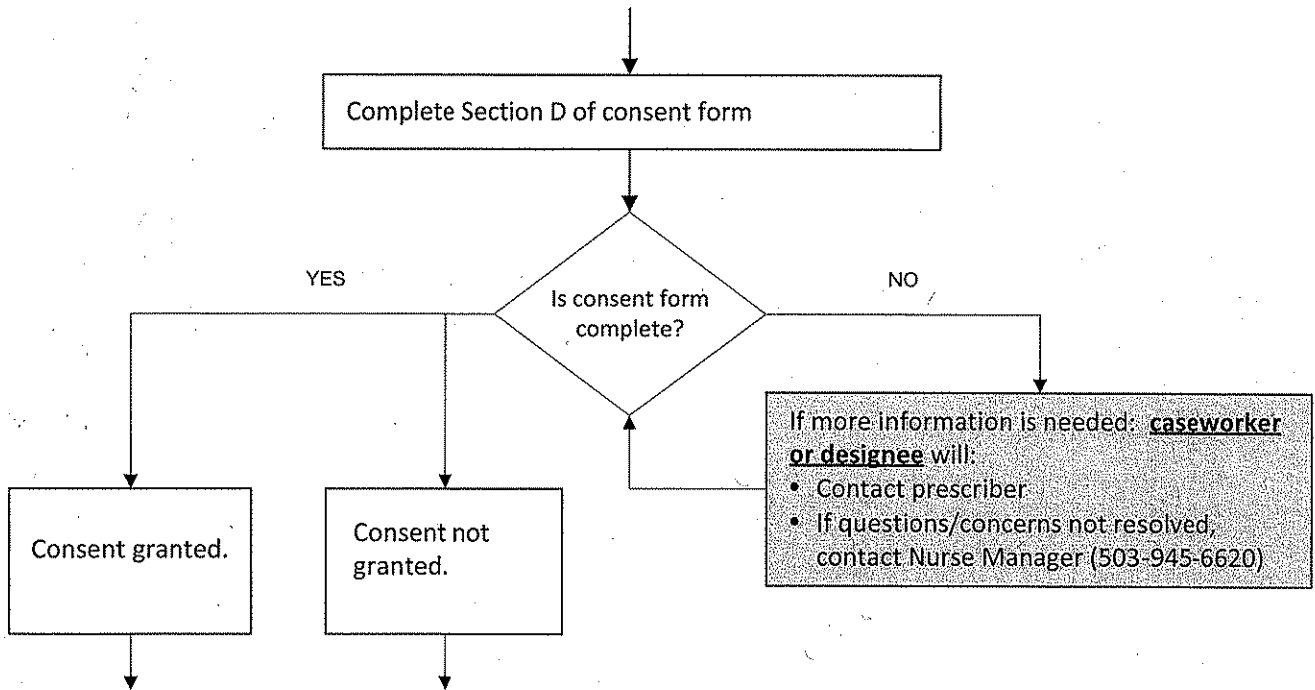
When consent form is received, **branch personnel** will:



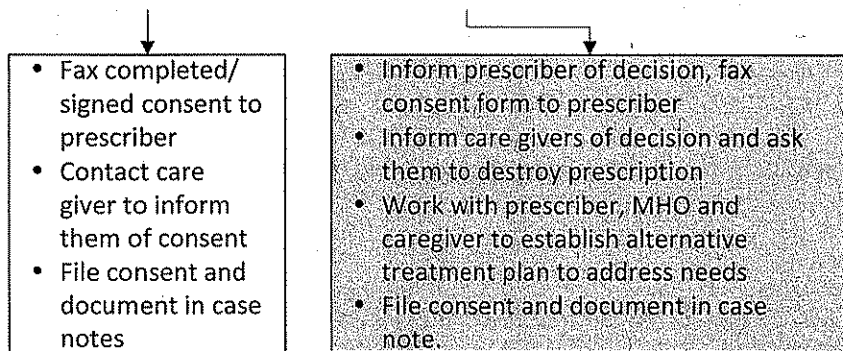
3. Upon receipt of consent, caseworker will:



4. Child welfare program manager or designee will:



5. Caseworker or designee will:



Care giver fills Rx and gives med to child.